

STEP 3

Do this

Signal the instructor for the *Autodesk Learning Assistance* CD and insert it into the proper drive. Click on **Programs** and select *Autodesk Learning Assistance*.

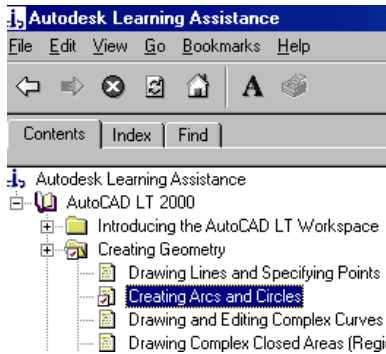


Figure 4-1



Figure 4-2

Creating Arcs and Circles/Filling Areas

- 1** From the main screen, double-click on the Creating Geometry folder to reveal the lessons contained within; click on Creating Arcs and Circles (**Figure 5-1**). A lessons screen will appear to the right.
- 2** Click on the Play Video icon (**Figure 5-2**) and the lesson will begin; pay close attention to the instructions as you will be able to use the commands throughout the module.
- 3** When the clip is finished, click on the Contents tab to return to the screen containing the lesson folders.
- 4** Select the lesson on Filling Areas, then click on the Play Video icon.
- 5** At the end of the clip, exit out of the *Autodesk Learning Assistance* program and return the CD to the instructor.

STEP 4

Career choices

In the next step we will be working on creating a logo design. CADD is used in different areas of the Business and Marketing field. Let's examine a couple of these careers where CADD technology is being used. Click on **Lessons, Activity 5**, and view the **Career** buttons. Be sure to read all of the information and view the pictures. One of these careers may be right for you!